

Ask your doctor about the  
BP SurePath™ Test. Today.



*References: 1. Desai M, Role of Automation in Cervical Cytology, Diagnostic Histopathology 2009, 15:7, p323-329 // 2. Freemont-Smith M, Marino J, Griffin B, Spencer L and Bollock D, Comparison of the SurePath™ liquidbased Papanicolaou Smear with the Conventional Papanicolaou Smear in a Multi site Direct-to-Vial Study, Cancer Cytopathology 2004, 102:5, p269-279. // 3. Kirschner B, Simonsen K and Junge J, Comparison of Conventional Papanicolaou Smear and SurePath™ liquid-based cytology in the Copenhagen population screening programme for cervical cancer, Cytopathology 2006, vol 17, p187-194. // 4. BD PrepStain™ Slide Profiler Product Insert Direct-to-Vial study population.*



Innovative Diagnostics is a medically managed service practice led by a group of doctors and supported by a dedicated team of senior and experienced industry professionals. We are forging a new path and aspire to set industry benchmarks in doctor and patient experiences.

## innovative DIAGNOSTICS

### MAIN LABORATORY

Frontech Centre, Level 5-02 to 5-07  
15 Jalan Kilang Barat Singapore 159357  
Tel: 6235 6950 Fax: 6733 8563

### STAT LABORATORY

Camden Medical Centre, Level 9-06 to 9-07  
1 Orchard Boulevard Singapore 248649  
Tel: 6333 6640 Fax: 6333 6642

### STAT LABORATORY

Novena Specialist Centre  
Level 07-12 8 Sinaran Drive, Singapore 307470  
Tel: +65 6734 0778 Fax: +65 6734 0773



# Pap Smear and BD SurePath™ Tests



innovative  
DIAGNOSTICS

## ► What is a Pap smear?

A Pap smear is a simple procedure in which cells are removed from the lower end of the womb (cervix) during an internal examination of the vagina. The cells are smeared onto a slide and sent to the laboratory, where trained scientists examine the cells under a microscope.

## ► Why have a Pap smear?

Pap smears are an easy way to detect early changes in the cells of the cervix. Over several years, these changes may develop into a cancer. If these changes are found and treated early, most cancers can be prevented. Having regular Pap smears has been shown to reduce the likelihood of developing cervical cancer. Having regular Pap smears could save your life.

## ► How effective is a Pap smear?

A Pap smear is a screening test and a single test does not always detect all abnormalities. Having regular Pap smears greatly increases the chances of finding early, pre-cancerous changes.

## ► Who needs a Pap smear?

- All women who are or have been sexually active.
- Women after menopause still need a Pap smear.
- Women who have had a hysterectomy for previous disease of the cervix.
- Women over 60 years.
- Women who smoke.
- Women who have had or has human papilloma virus (HPV) infection or genital warts or a sexually transmitted disease (STD).

## ► What about the results?

Your Pap smear will be sent to Innovative Diagnostics for testing and the results will be sent to your doctor. Your doctor will arrange for the result to be given and explained to you directly.

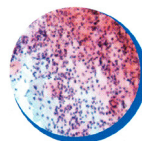
## ► How is the BD SurePath™ Liquid-Based Pap Test different from the Conventional Pap Test?

In a conventional Pap Smear, cells are scraped from the cervix and smeared directly onto a slide in the doctors office and the collection device is discarded along with remaining cervical cell sample.

For the BD SurePath LBC Pap test, your doctor or nurse will collect your smear in exactly the same way as usual. However, instead of throwing the collection instrument away after the smear is made, the device is dropped into a vial with preservative solution. Only the BD SurePath™ LBC Pap test ensures 100% of your collected cells are sent to the laboratory for testing.

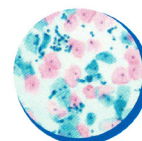
## ► BD SurePath™ – Liquid-Based Pap Test

Conventional Slide

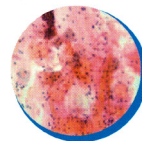


Inflammation

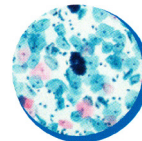
BD SurePath™ test



Split Sample after Cell Enrichment



Bloody Specimen



Obscuring material is removed, providing greater clarity for diagnosis

## BD SurePath™ LBC Pap test?

Recent studies provide the following advantages<sup>1,2,3</sup> over conventional Pap smears, including:

- 64.4% increased detection of HSIL+ (high-grade squamous intraepithelial lesion) detection<sup>4</sup>, a significant pre-cancerous condition.
- A cell enrichment preparation process, which reduces obscuring material such as blood or mucus on the slide, providing greater clarity for diagnosis.
- Greater cell yield resulting in significantly fewer unsatisfactory cases and reducing the rate of repeat testing.
- 100% of your collected cells are sent to the laboratory for testing enabling better results.
- A collection method that allows the laboratory to perform additional tests using the same cell solution if required, saving doctors and patient time and costs.

## ► What can I do to protect myself?

Discuss this with your doctor and ask them to place you on a routine Pap test schedule. Ask your health care provider about BD SurePath™ LBC Pap test, the only liquid-based test that ensures 100% of the collection sample goes to the lab for testing. The BD SurePath™ collection process could mean the difference between finding disease and missing it. Be sure to make the right choice for you, ask for BD SurePath™ liquid based Pap test.